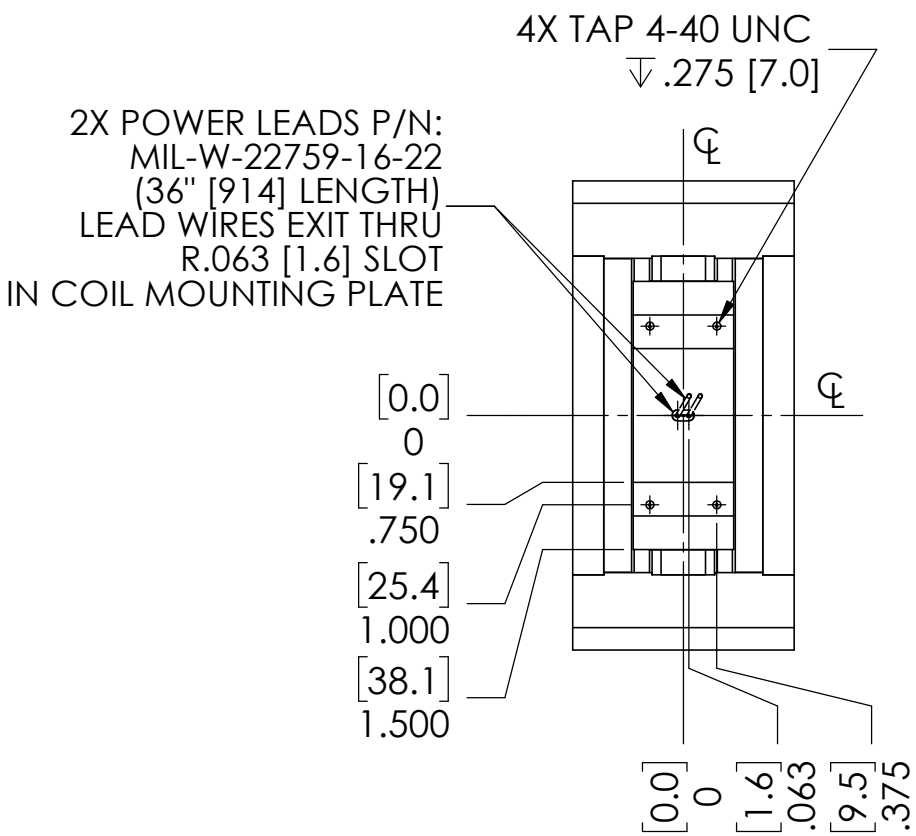
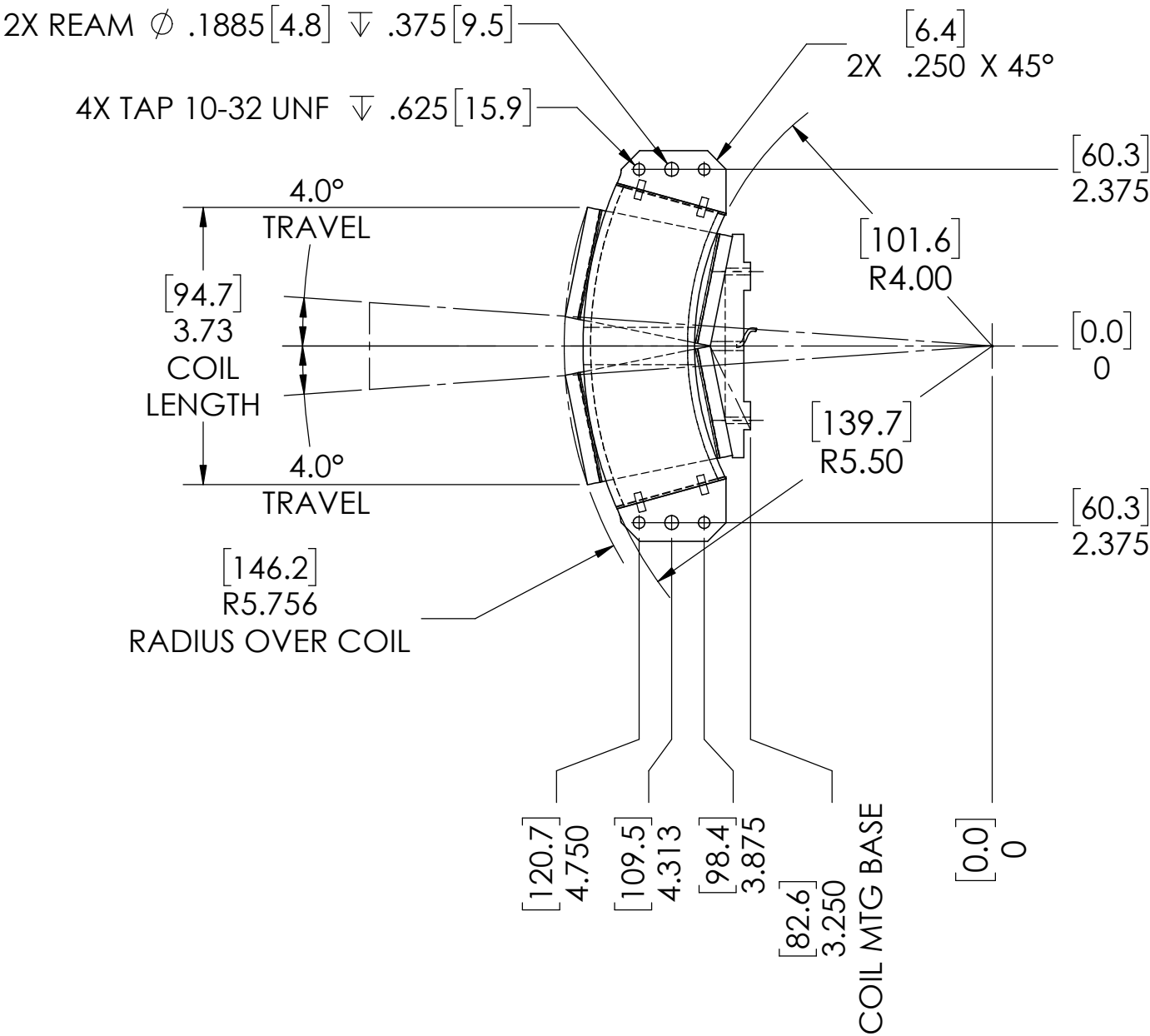
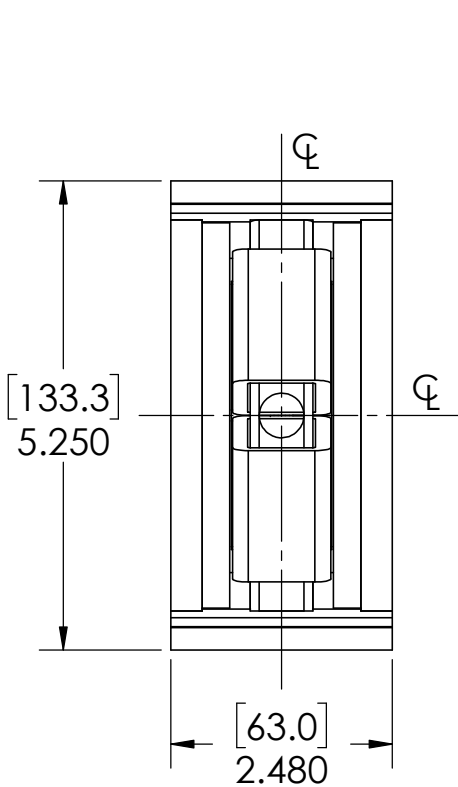
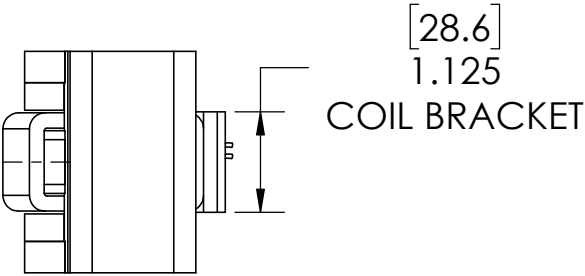


REVISION TABLE					
REV	ECN#	DESCRIPTION	REV BY	APPROVED	DATE
---	---	Original Drawing	SDC	MPW	10-5-17



1

2

3

4

5

A

B

C

D

A

B

C

D

ROTARY VOICE COIL ACTUATOR SPECIFICATIONS		
Motor P/N	TWR-0008-800-2RC	
Stroke	8 degrees	0.14 radians
Housed with Bearings	No	
Coil Mass*	4.8 oz	136 grams
Total Mass	76.8 oz	2177 grams
Resistance @ 20°C*	8.3 Ω	
Motor Constant	in-oz/sqrt(watt)	N-cm/sqrt(watt)
Torque Constant	in-oz/amp	N-cm/amp
Torque @ 100% Duty	800 in-oz	565 N-cm
Torque @ 10% Duty	2400 in-oz	1695 N-cm
Power @ 100% Duty**	50 watts	
Power @ 10% Duty**	150 watts	
Current @ 100% Duty	2.45 amps	
Current @ 10% Duty	7.35 amps	

* VALUE MEASURED PER SINGLE COIL

** VALUE MEASURED INCLUDES BOTH COILS

